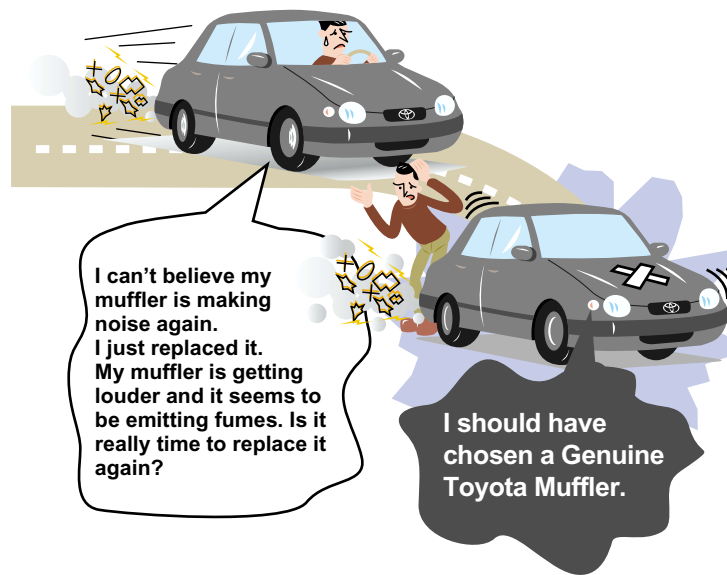
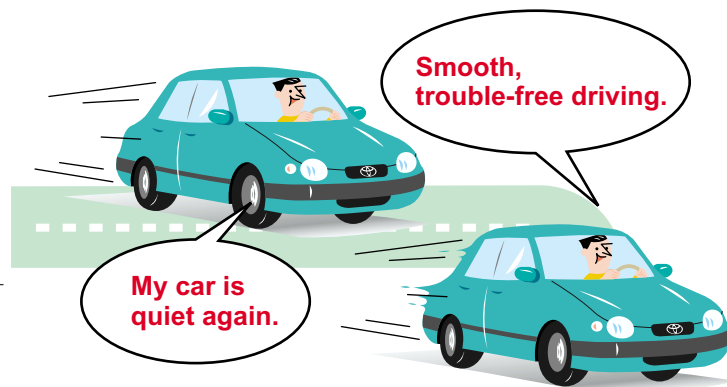


## WHAT IF THE MUFFLER RUSTS OR IS DAMAGED?

Engine noise may occur when the muffler rusts. Attached parts may also rattle.



## Ask for Genuine Toyota.

Only Genuine Toyota Mufflers are designed and engineered specifically for your Toyota vehicle. For trouble-free driving, always ask for a Genuine Toyota Muffler.



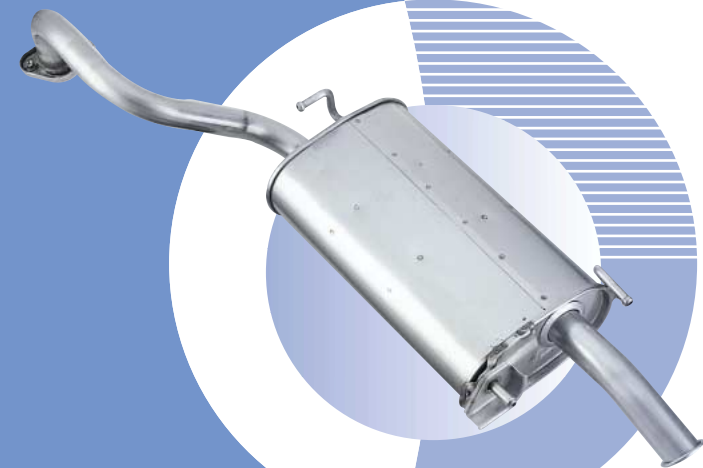
**TOYOTA**  
GENUINE PARTS

TOYOTA MOTOR CORPORATION

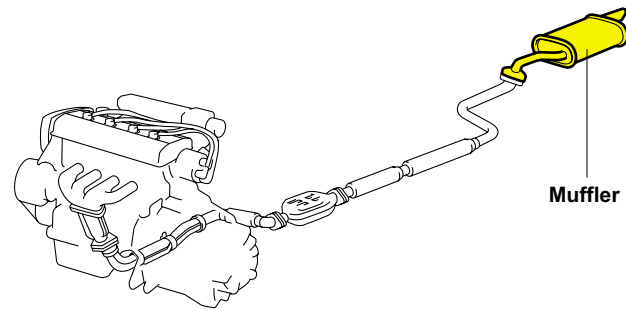
No.91699-07E  
Printed in Japan

**TOYOTA**

Genuine parts bring genuine value.  
**MUFFLER**



**M**UFFLERS minimize noise from the engine.



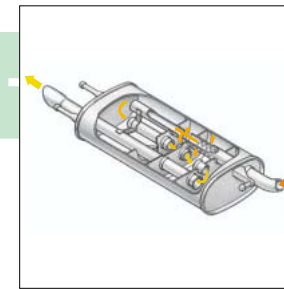
## With a Genuine Toyota Muffler



GENUINE



GENUINE



GENUINE



GENUINE

### Capacity

The capacity of a Genuine Toyota Muffler is appropriate for each model. The result is smooth running and reduced noise. The capacity of non-genuine mufflers is often not sufficient for the engine's emissions. If exhaust gases are not allowed to flow efficiently, even new non-genuine mufflers will emit noise.

### Supporting Parts

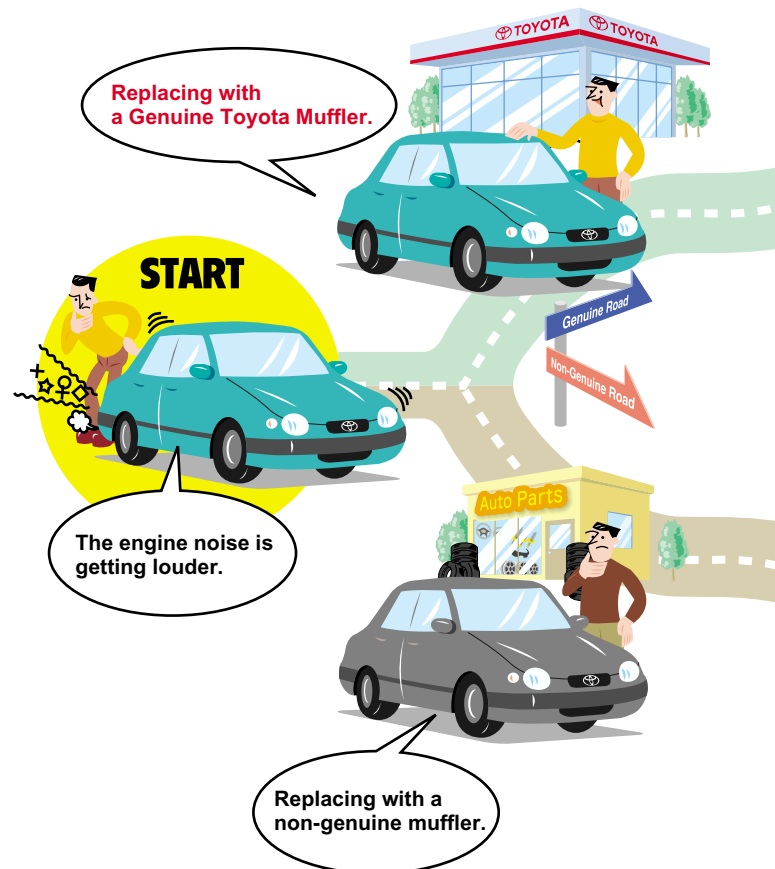
The supporting parts on a Genuine Toyota Muffler are strong enough to eliminate muffler vibrations. Since many non-genuine supporting parts are poorly constructed, they transmit vibrations to the chassis, creating noise.

### Resonator

A Genuine Toyota Muffler is equipped with a resonator which helps reduce noise pollution. Although some non-genuine mufflers also have resonators, they often fail to synchronize with the engine and therefore do not efficiently reduce noise.

### Durability

A Genuine Toyota Muffler is made from stainless or galvanized steel, adding to their durability. Because some non-genuine mufflers are not corrosion resistant, they do not last as long.




NON-GENUINE



NON-GENUINE



NON-GENUINE

 Poorly constructed non-genuine mufflers are not only loud, they wear out faster. They require frequent replacement, which adds to their cost in the long run.

## Without a Genuine Toyota Muffler